

# Park Residence.

North Hill



# Master Plan



INTRODUCING

# Park Residence

Peacefully nestled within Taj City, Park Residence is an exclusive invitation to live amidst breathtaking nature where serenity and luxury transform your everyday life. Designed with contemporary needs in mind, Park Residence re-imagines space from a fresh perspective, introducing a variety of elegantly-appointed units that not only maximize views on green landscapes, but also grant homeowners the opportunity to experience a comprehensive life where nature, commercial excellence, top-class education, business and lively entertainment abound. By combining functional simplicity with modern-day luxury, every aspect of Park Residence allows you to enjoy an intimate yet signature lifestyle, perfected by uninterrupted freedom and natural beauty wherever you turn.

# OH

North Hill





## North Hill

Ground Floor Apartment 03

## Building Number

P 34, 38

### Total Gross Area:

142.8 SQM

### Garden Area:

67.7 SQM

#### Reception

6.00 x 4.75 m<sup>2</sup>

#### Bedroom 1

3.60 x 3.60 m<sup>2</sup>

#### Terrace

1.50 x 4.75 m<sup>2</sup>

#### Bedroom 2

4.25 x 3.60 m<sup>2</sup>

#### Kitchen

3.15 x 2.60 m<sup>2</sup>

#### Bathroom 1

3.10 x 1.60 m<sup>2</sup>

#### Toilet

1.85 x 1.28 m<sup>2</sup>

#### Bathroom 2

3.10 x 1.60 m<sup>2</sup>



#### Disclaimer

All dimensions shown above are axis to axis. Diagrams are not to scale, they don't include structural elements and are for illustrative purposes only. MNHD reserves the right to make minor alterations. All renderings and other visual materials, designs, facades are for demonstrative purposes only and are subject to change. The total built up area of the unit includes the walls thickness and the unit share of building utilities. All units will be delivered unfinished "Brick Walls Only".

# North Hill

Ground Floor Apartment 01

# Building Number

P 38

## Total Gross Area:

122.7 SQM

## Garden Area:

30.3 SQM

### Reception

4.30 x 3.40 m<sup>2</sup>

### Bathroom

2.80 x 1.50 m<sup>2</sup>

### Dressing

1.80 x 1.70 m<sup>2</sup>

### Dining

3.80 x 3.60 m<sup>2</sup>

### Bedroom 1

3.60 x 3.60 m<sup>2</sup>

### Terrace

1.50 x 3.40 m<sup>2</sup>

### Master Bedroom

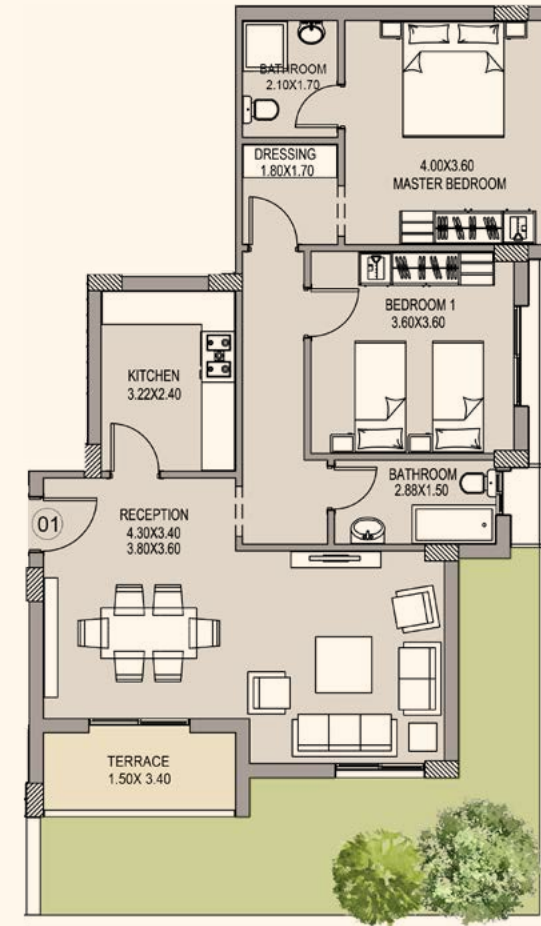
4.00 x 3.60 m<sup>2</sup>

### Kitchen

3.22 x 2.40 m<sup>2</sup>

### Master Bathroom

2.10 x 1.70 m<sup>2</sup>



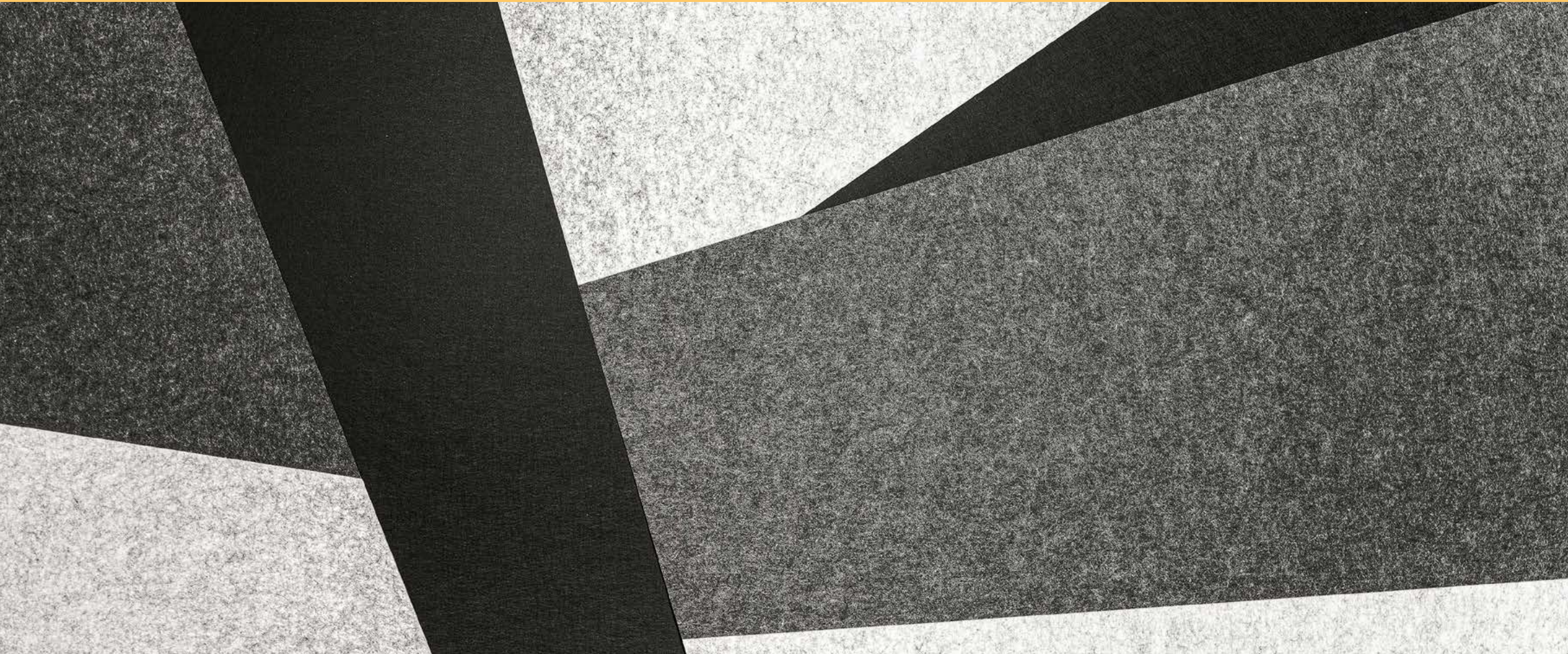
#### Disclaimer

All dimensions shown above are axis to axis. Diagrams are not to scale, they don't include structural elements and are for illustrative purposes only. MNHD reserves the right to make minor alterations. All renderings and other visual materials, designs, facades are for demonstrative purposes only and are subject to change. The total built up area of the unit includes the walls thickness and the unit share of building utilities. All units will be delivered unfinished "Brick Walls Only".

# About The Developer

Madinet Nasr for Housing & Development (mnhd) is a company built on 60 years of history and expertise in real estate development. Madinet Nasr for Housing & Development's legacy comes from its well-curated team of global experts and local talents, who developed mega projects for a diverse portfolio of clients.

Among its most recognized ventures is Sarai, which is located on Cairo-Suez Road, and only five minutes away from The New Capital. With its evolution in adept infrastructure and utilities, MNHD is setting forth a new era of real estate in Egypt.



**Sales Office:**

Cairo-Suez Rd.: Located on the extension of El Thawra St., in front of  
Cairo International Airport.

[mnhd.com](http://mnhd.com) | 16750

