

origami

Camellia Apartments
Perspective & Floorplans

Typical Apartments





Re-imagining balanced order from an innovative perspective,

Camellia Apartments take the form of identical folded units to introduce a harmonious living space spread out on typical floors. Starting from 58 m² to 169 m².



A bird's eye view of the Great Pyramid of Giza during the Equinox shows that it actually has eight sides instead of four like every other Egyptian pyramid. That is to say, that its four sides are hollowed in or indented along their central lines, from base to peak. Inspired by our glorious history and ancient Japanese art, Origami unfolds a new era within Taj City, offering beautiful homes to behold.

Introducing Origami

A signature life in the form of art.

Origami is not just an art form, but also the philosophy behind Taj City's latest exclusive residential community. Artfully brought to life by Minka Signature Communities - a leading game-changer with a diverse pool of properties, innovating real estate through boutique experiences. Origami is where unmatched luxury meets minimal architecture to fold within its heart green spaces, as well as world-class amenities at every doorstep. Ideally located on the very edge of Taj City, Origami re-defines integrated living from a modern perspective by combining commercial excellence with refined hospitality under one mixed-use vision. The real edge of Origami lies in its innovative urban approach that fully transforms your life into a journey of non-stop discovery on foot. The pedestrian-friendly destination is planned with walkability in mind to offer an interconnected world where lush walkways and pocket parks promote active movement, as well as ultimate well-being.

Precious
Memories to
Withhold



Proximity & Location

The closest you'll ever be to the entire city.

Origami promises a hassle-free living experience that allows you to enjoy in a private lifestyle of utmost luxury while lying minutes away from Cairo's lively happenings in every direction. The mixed-use residential community crowns an ideal location, offering homeowners direct access to both the Suez Road and The Ring Road. Origami also crowns the very edge of Taj City not only elevating new standards of modern living but also opening onto majestic views of the entire development.



A dark, geometric interior space with wood-paneled walls and a spotlight on the floor. The scene is composed of dark, angular shapes and vertical wood paneling. A bright, circular spotlight illuminates a section of the floor in the lower right, creating a strong contrast with the surrounding shadows. The overall mood is mysterious and modern.

New Stories
Yet Untold

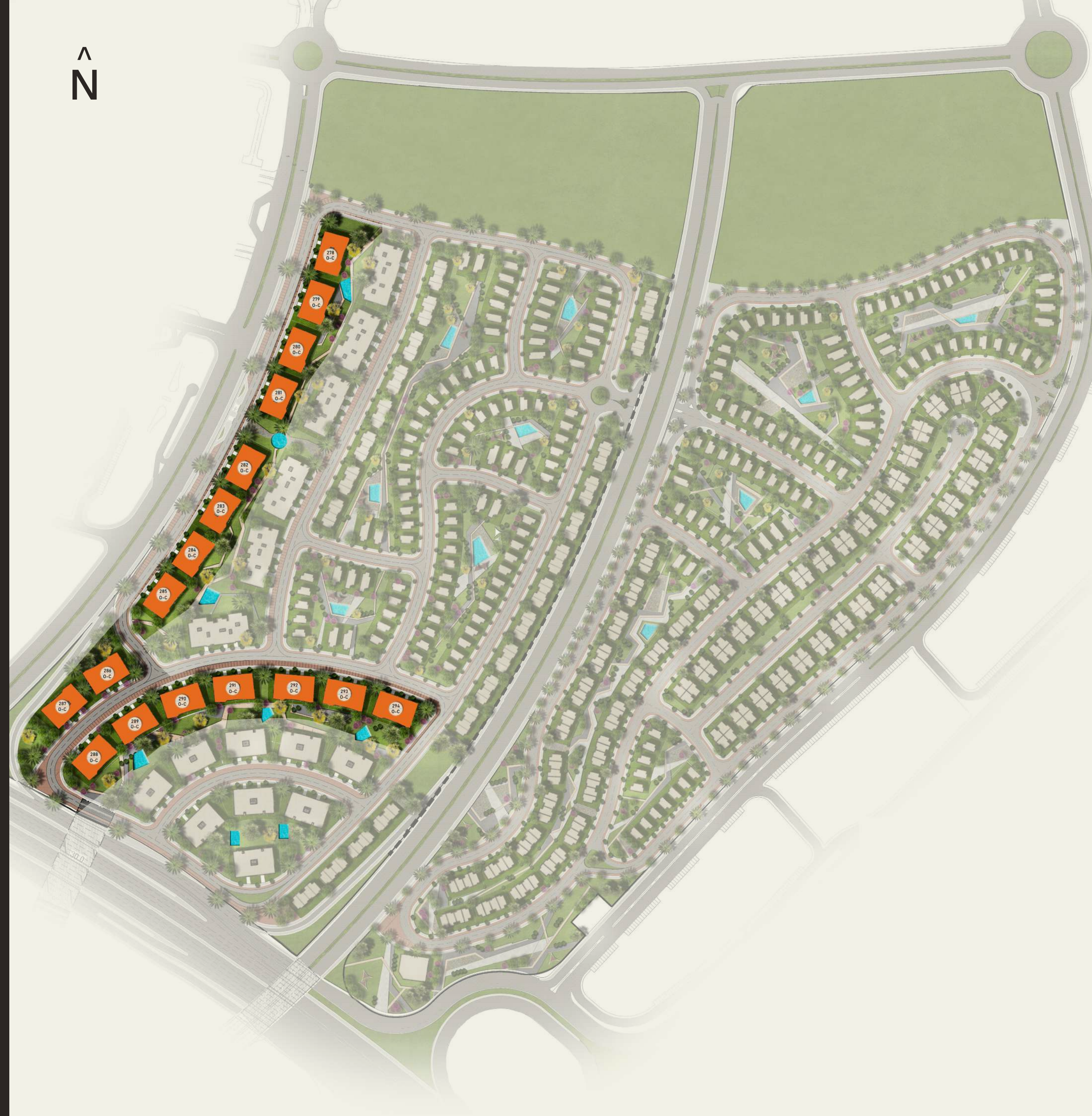
Masterplan

Elevating new standards of luxury living where true integration comes alive.

Rolling out on an impressive 350,000 m² of land, Origami is a self-sufficient community where exclusive amenities and nature inspire everyday life. Thoughtfully designed as a luxurious residential escape for people not cars, the parcel dedicates around 80% of its land to breathing spaces and lush interconnected roads to envelop residents in an ever-green reality that beautifully contrasts with minimal architecture, all around. By putting walkability at the forefront of its masterplan, Origami encourages homeowners to indulge in mindful moments while inviting them to discover authentic experiences on foot. With a sleek commercial area alive with possibilities, homeowners can enjoy the best of all worlds without having to leave the destination.



Camellia Apartments



Inspired Architecture

Sophisticated simplicity
Re-imagined

Every home at Origami captures the best in minimalist architecture where less is always more. Crafted to take breathing comfort and refined style to a whole new level of elegance, every unit boasts clean, unadorned facades that proudly rise from a private garden to inspire a tranquil life-style. Boasting manicured terraces with large windows, your home is a unique sanctuary of calm that welcomes lush views inside your comfort zone, in addition to natural daylight.



Disclaimer: All illustrations, floor plans and dimensions are conceptual and subject to development as per contract terms.



Disclaimer: All illustrations, floor plans and dimensions are conceptual and subject to development as per contract terms.

The background features a dark grey triangle on the left side. The rest of the image is composed of diagonal bands of color, including shades of green, yellow, and orange, set against a dark, textured background.

A Community-
Centric Vision
Where Life Unfolds
All Around



Commercial Distinction

For memorable times

Origami's commercial area is a lively destination to shop, recreate or simply connect with friends over coffee. Crisp, contemporary and always exciting, the commercial area is a guarantee for good times, thanks to a hand-picked variety of brands across varied categories, in addition to fresco cafes and signature F&B concepts inspiring day-long indulgence



Seamless Walkability

**An active lifestyle where
greenery abounds**

Kick-start your day with a brisk walk along manicured landscapes, cycle to get your blood flowing or simply join friends to jog where immaculate nature follows you, everywhere you go. Master-planned with families well-being in mind, Origami invites the whole community to create an uninterrupted connection with the natural world while staying active, thanks to true accessibility of all amenities on foot.

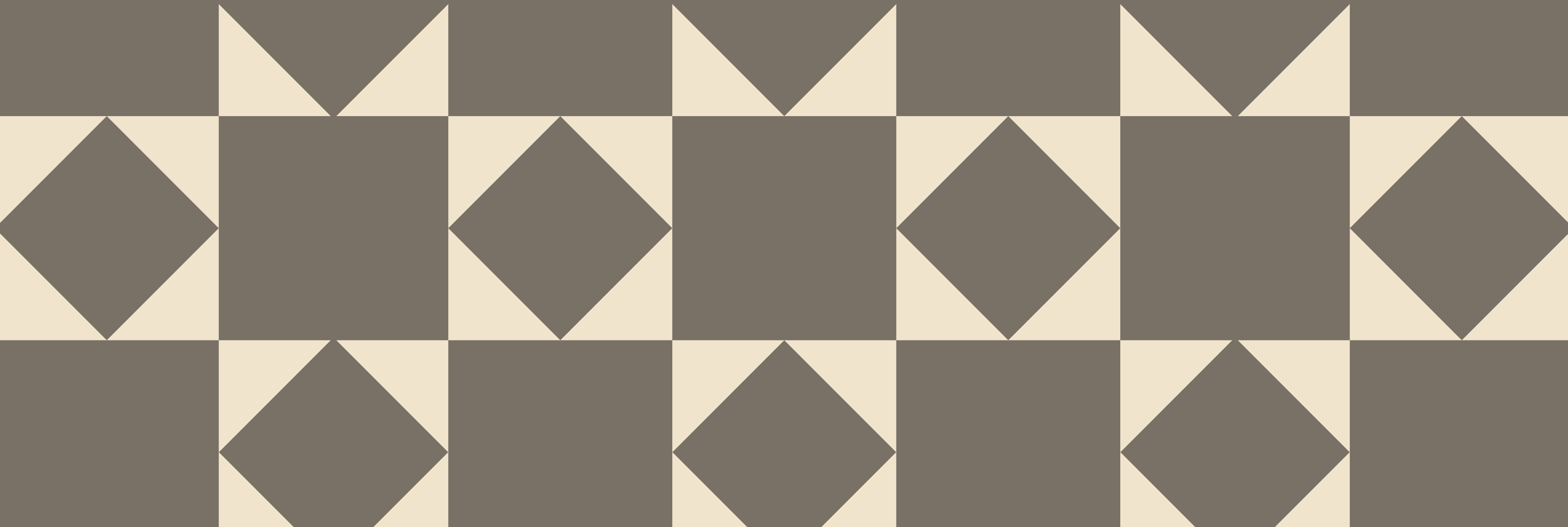


Flexible unit spaces

For every lifestyle

Origami's signature collection of elegantly-appointed units are smartly designed around residents' various needs. With flexible spaces and highly functional layouts, each home captures a unique air of breathing freedom that allows homeowners to enjoy the best in modern-day function, as well as luxurious form. Ideal for young couples wishing to dream big and families wanting to elevate their lifestyle, Origami's flexible unit types are truly a place to belong.

Perspective & Floorplans



Disclaimer: All Illustrations, floor plans and dimensions are conceptual and subject to development as per contract terms.



Disclaimer: All Illustrations, floor plans and dimensions are conceptual and subject to development as per contract terms.





Camellia Apartments

Ground Floor

Ground Floor Plan

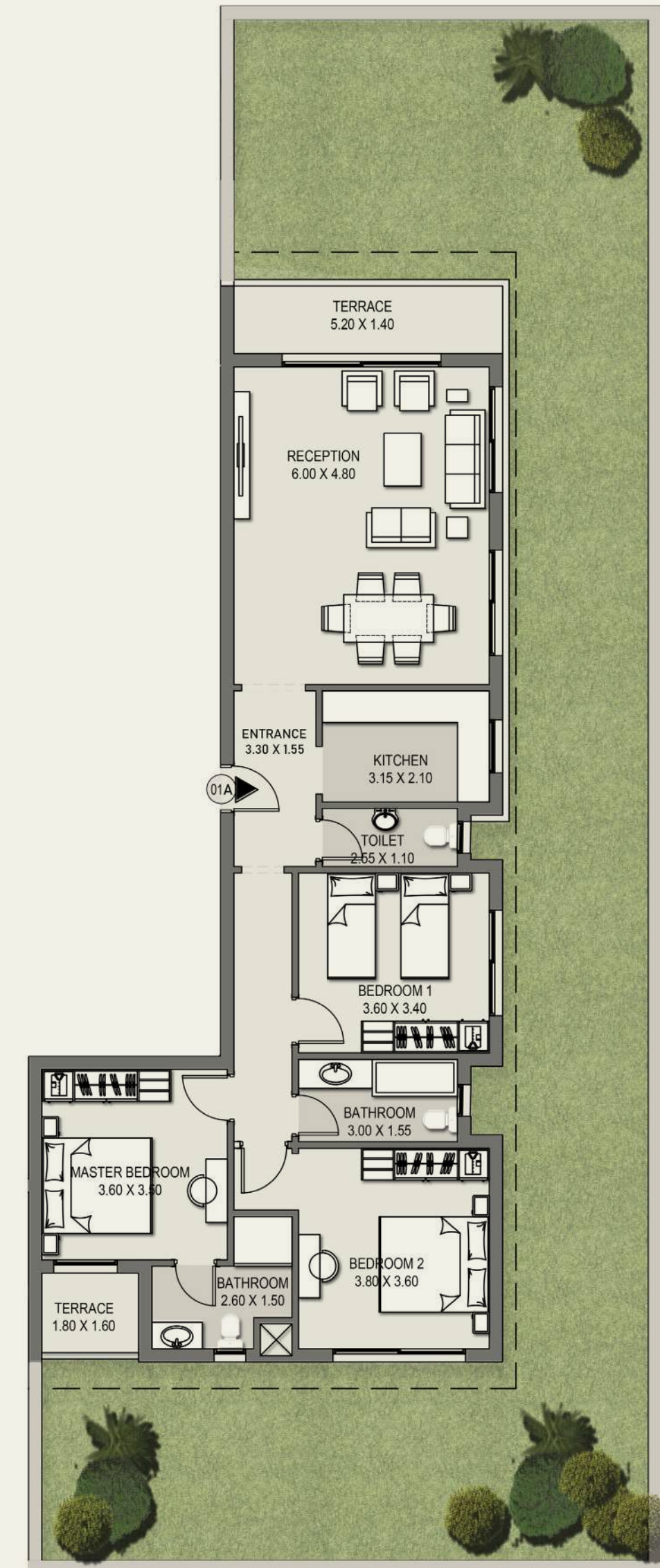


Camellia Apartments - 01

Total BUA: 164.50 m²

Ground Floor

Reception	6.00 x 4.80 m ²
Entrance	3.30 x 1.55 m ²
Kitchen	3.15 x 2.10 m ²
Toilet	2.55 x 1.10 m ²
Bedroom 1	3.60 x 3.40 m ²
Master Bedroom	3.60 x 3.50 m ²
Bathroom	2.60 x 1.50 m ²
Terrace	1.80 x 1.60 m ²
Bathroom	3.00 x 1.55 m ²
Bedroom 2	3.80 x 3.60 m ²
Terrace	5.20 x 1.40 m ²



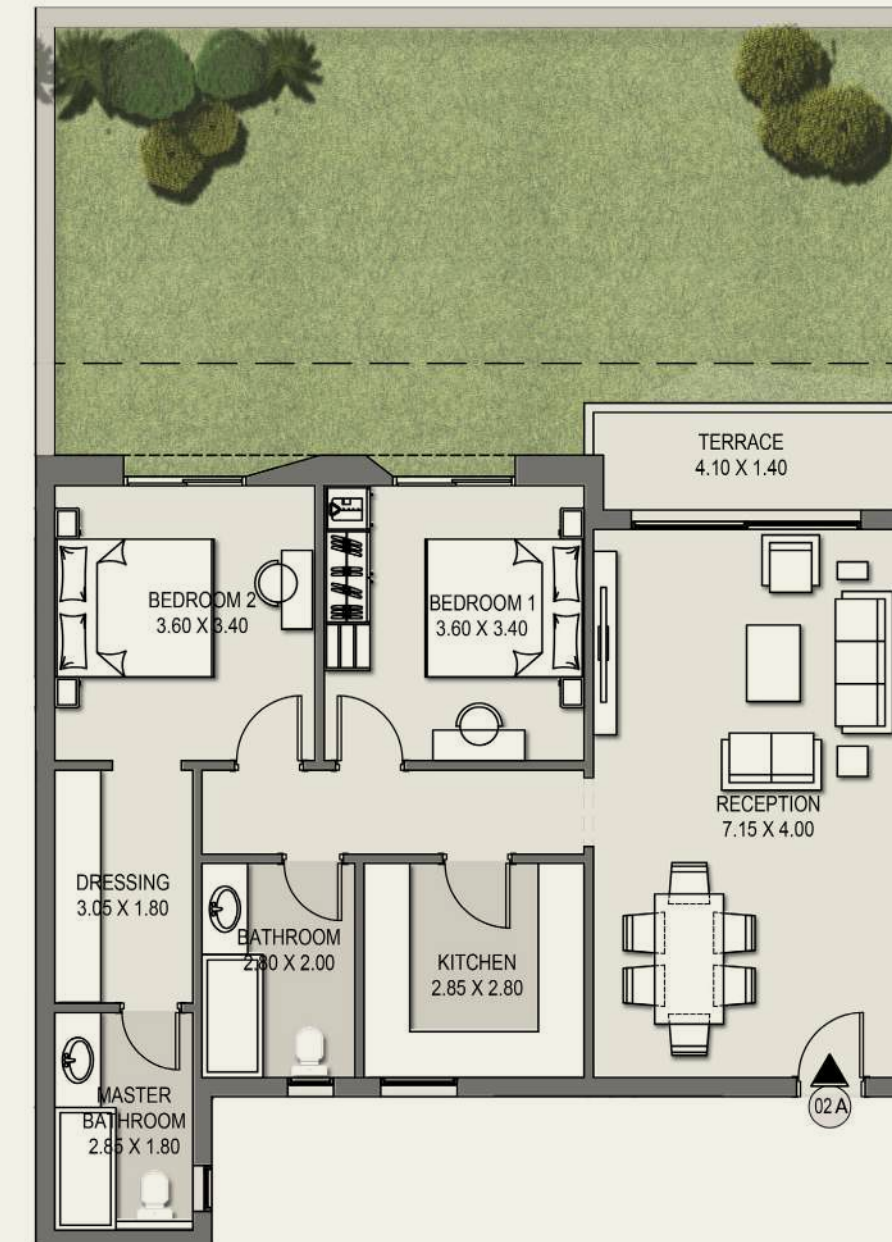
Disclaimer: All illustrations, floor plans and dimensions are conceptual and subject to development as per contract terms.

Camellia Apartments - 02

Total BUA: 130.50 m²

Ground Floor

Reception	7.15 x 4.00 m ²
Bedroom 1	3.60 x 3.40 m ²
Bedroom 2	3.60 x 3.40 m ²
Dressing	3.05 x 1.80 m ²
Master Bathroom	2.85 x 1.80 m ²
Bathroom	2.80 x 2.00 m ²
Kitchen	2.85 x 2.80 m ²
Terrace	4.10 x 1.40 m ²



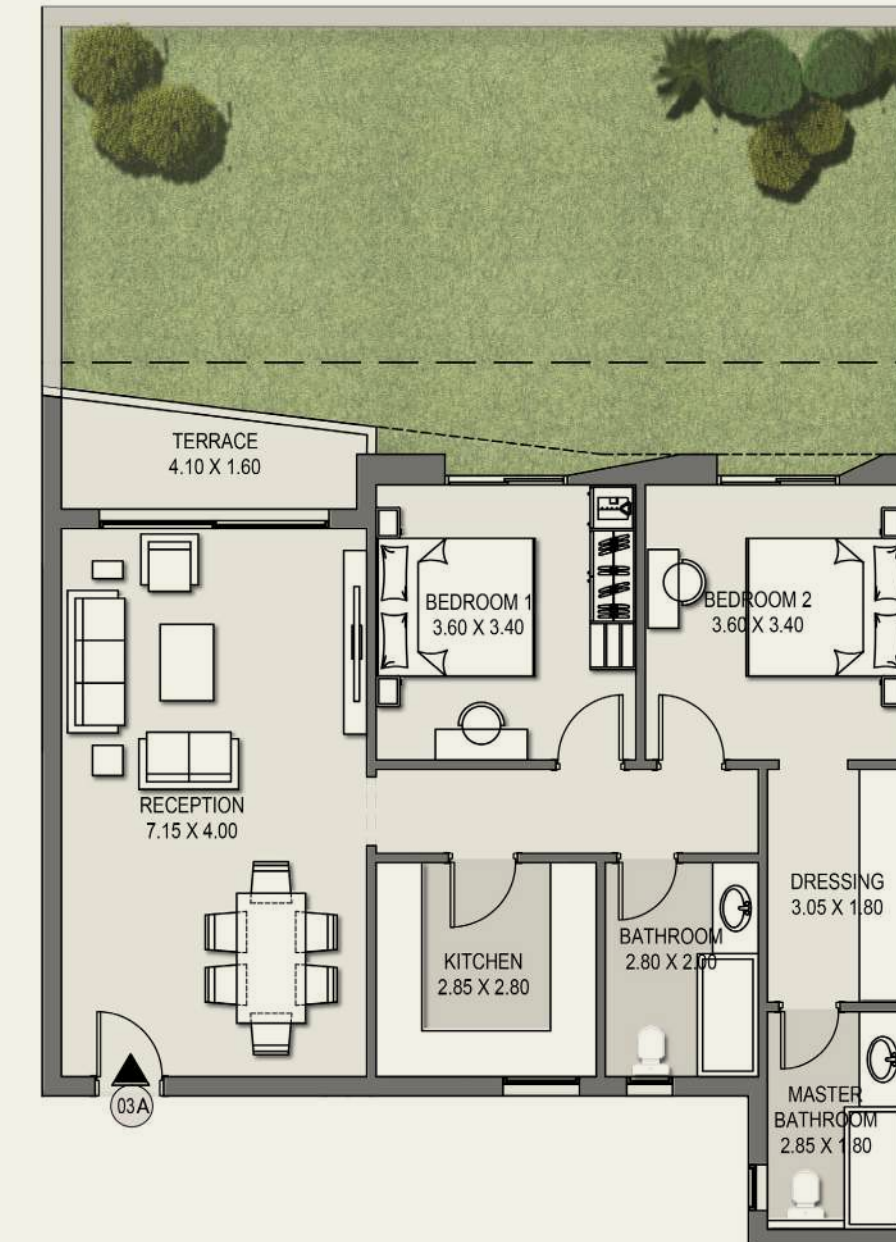
Disclaimer: All illustrations, floor plans and dimensions are conceptual and subject to development as per contract terms.

Camellia Apartments - 03

Total BUA: 130.50 m²

Ground Floor

Reception	7.15 x 4.00 m ²
Bedroom 1	3.60 x 3.40 m ²
Bedroom 2	3.60 x 3.40 m ²
Dressing	3.05 x 1.80 m ²
Master Bathroom	2.85 x 1.80 m ²
Bathroom	2.80 x 2.00 m ²
Kitchen	2.85 x 2.80 m ²
Terrace	4.10 x 1.60 m ²



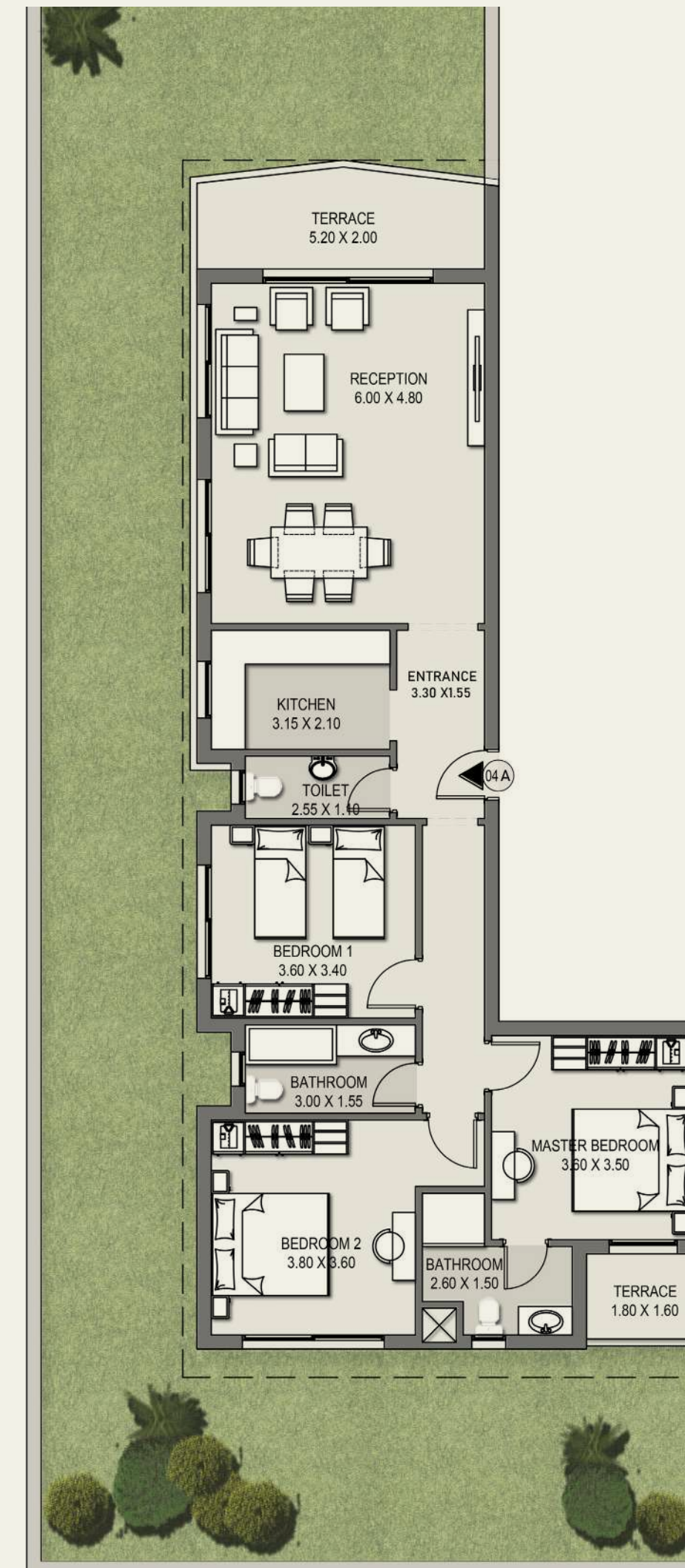
Disclaimer: All Illustrations, floor plans and dimensions are conceptual and subject to development as per contract terms.

Camellia Apartments - 04

Total BUA: 167 m²

Ground Floor

Reception	6.00 x 4.80 m ²
Entrance	3.30 x 1.55 m ²
Kitchen	3.15 x 2.10 m ²
Toilet	2.55 x 1.10 m ²
Bedroom 1	3.60 x 3.40 m ²
Master Bedroom	3.60 x 3.50 m ²
Bathroom	2.60 x 1.50 m ²
Terrace	1.80 x 1.60 m ²
Bathroom	3.00 x 1.55 m ²
Bedroom 2	3.80 x 3.60 m ²
Terrace	5.20 x 2.00 m ²



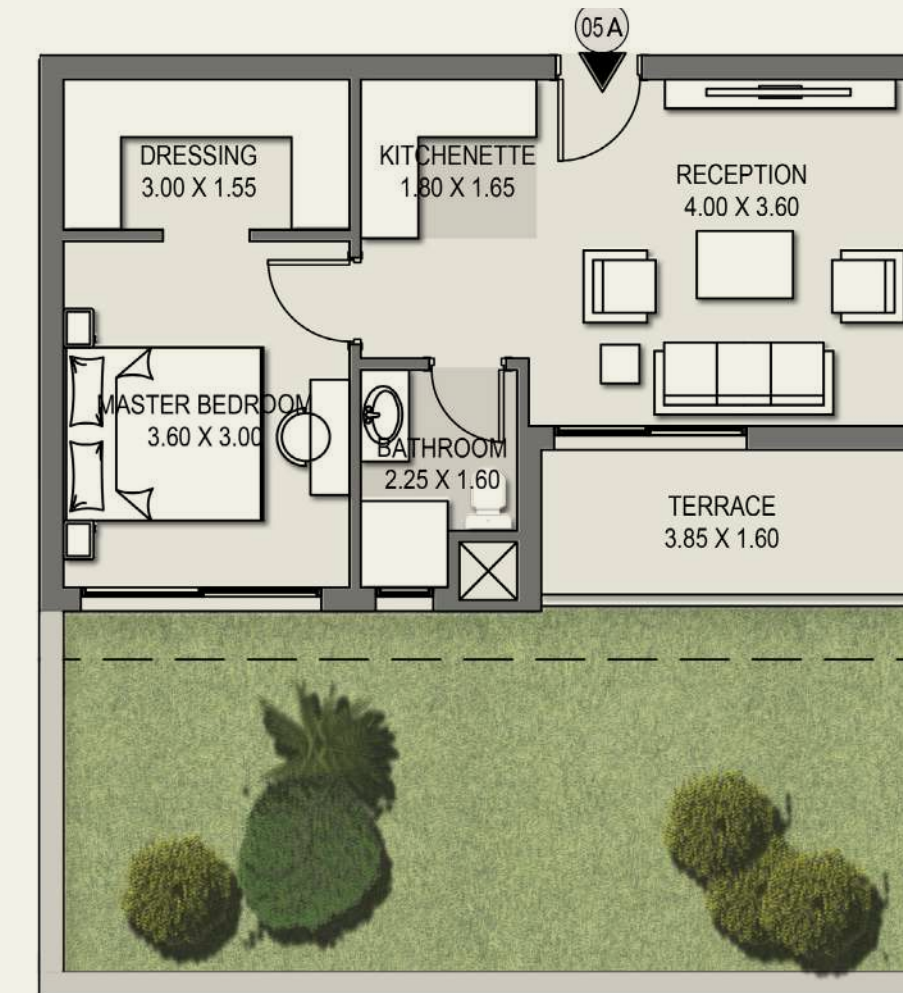
Disclaimer: All illustrations, floor plans and dimensions are conceptual and subject to development as per contract terms.

Camellia Apartments - 05

Total BUA: 68.50 m²

Ground Floor

Reception	4.00 x 3.60 m ²
Master Bedroom	3.60 x 3.00 m ²
Dressing	3.00 x 1.55 m ²
Bathroom	2.25 x 1.60 m ²
Kitchenette	1.80 x 1.65 m ²
Terrace	3.85 x 1.60 m ²



Disclaimer: All illustrations, floor plans and dimensions are conceptual and subject to development as per contract terms.



Camellia Apartments

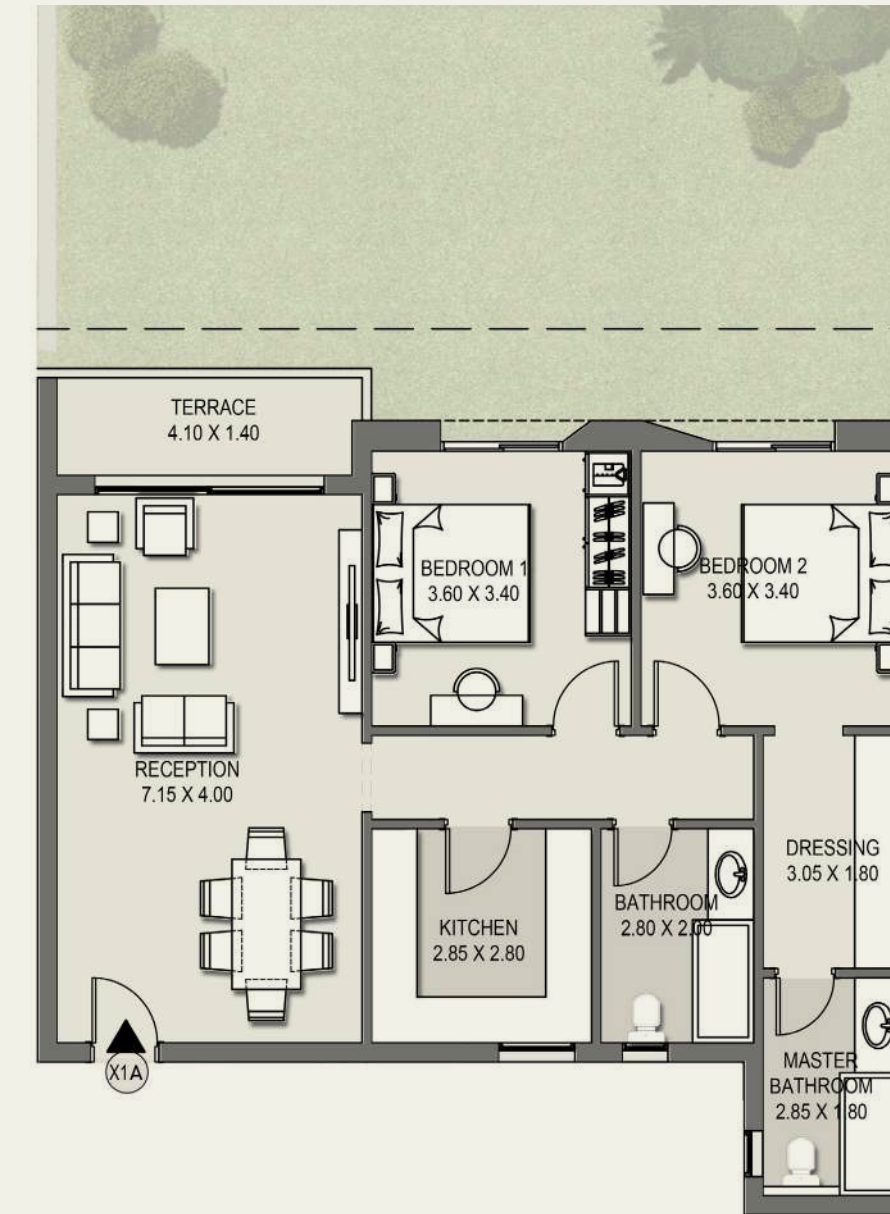
First, Third & Fifth Floor

Camellia Apartments - X1A

Total BUA: 129.50 m²

First Floor

Reception	7.15 x 4.00 m ²
Bedroom 1	3.60 x 3.40 m ²
Bedroom 2	3.60 x 3.40 m ²
Dressing	3.05 x 1.80 m ²
Master Bathroom	2.85 x 1.80 m ²
Bathroom	2.80 x 2.00 m ²
Kitchen	2.85 x 2.80 m ²
Terrace	4.10 x 1.40 m ²



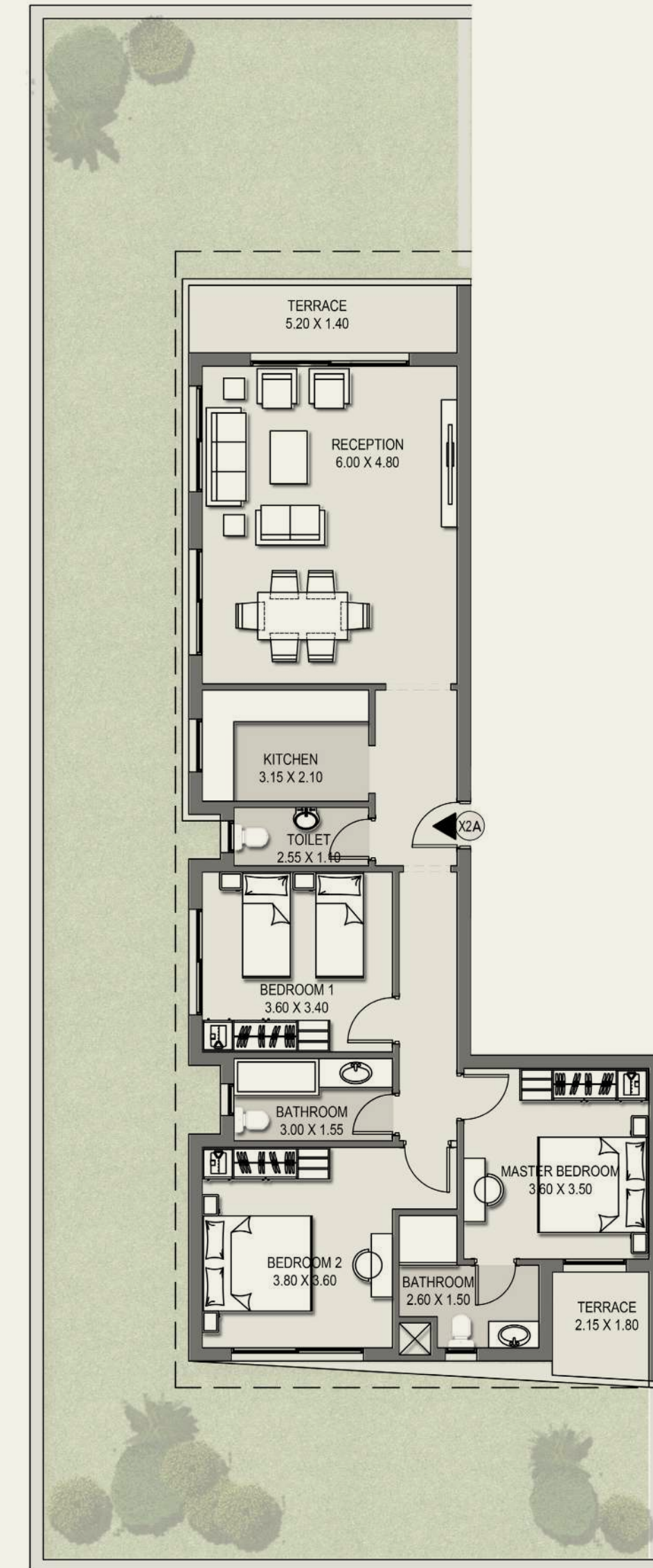
Disclaimer: All illustrations, floor plans and dimensions are conceptual and subject to development as per contract terms.

Camellia Apartments - X2A

Total BUA: 166.50 m²

First Floor

Reception	6.00 x 4.80 m ²
Kitchen	3.15 x 2.10 m ²
Toilet	2.55 x 1.10 m ²
Entrance	3.30 x 1.55 m ²
Bedroom 1	3.60 x 3.40 m ²
Master Bedroom	3.60 x 3.50 m ²
Bathroom	2.60 x 1.50 m ²
Terrace	2.15 x 1.80 m ²
Bathroom	3.00 x 1.55 m ²
Bedroom 2	3.80 x 3.60 m ²
Terrace	5.20 x 1.40 m ²



Disclaimer: All illustrations, floor plans and dimensions are conceptual and subject to development as per contract terms.

Camellia Apartments - X3A

Total BUA: 58 m²

First Floor

Reception	5.30 x 3.00 m ²
Master Bedroom	3.60 x 3.00 m ²
Bathroom	3.45 x 1.20 m ²
Terrace	2.85 x 2.15 m ²



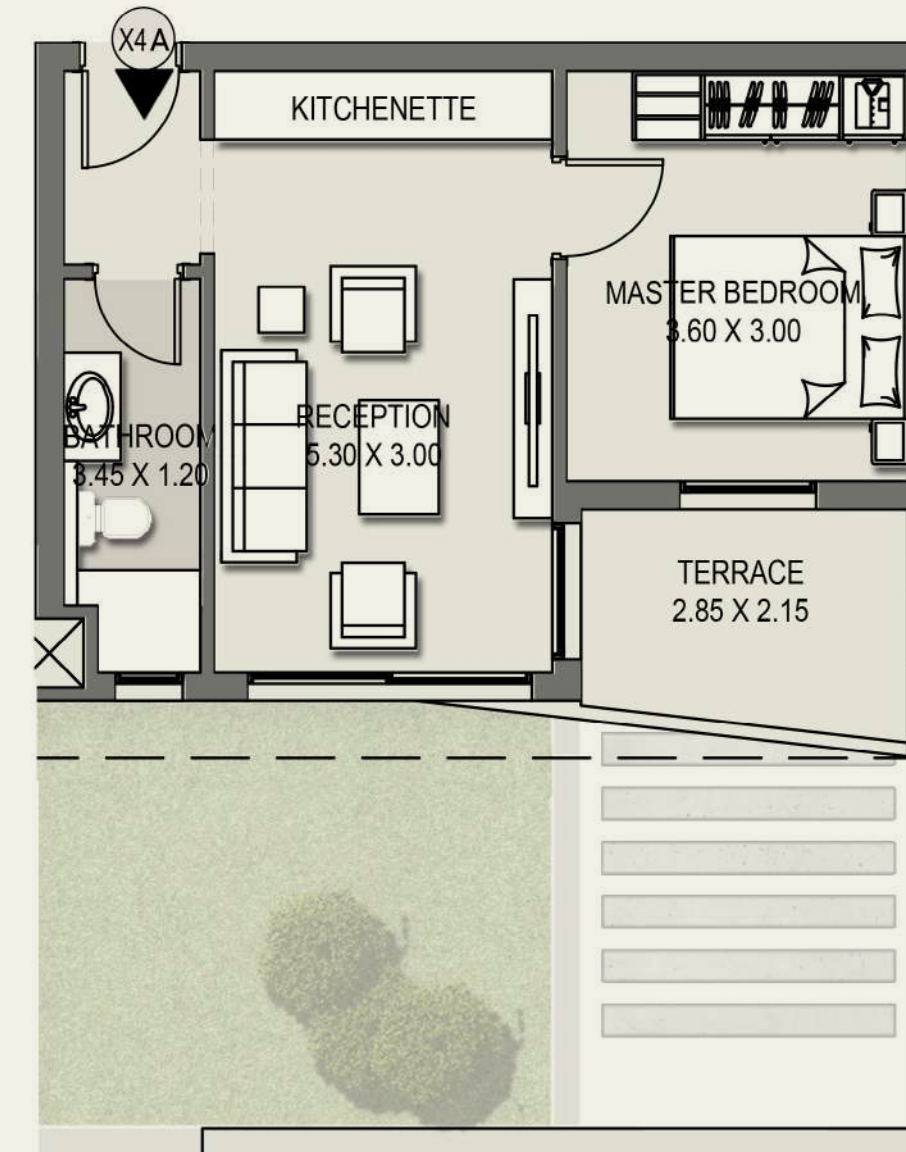
Disclaimer: All illustrations, floor plans and dimensions are conceptual and subject to development as per contract terms.

Camellia Apartments - X4A

Total BUA: 58 m²

First Floor

Reception	5.30 x 3.00 m ²
Master Bedroom	3.60 x 3.00 m ²
Bathroom	3.45 x 1.20 m ²
Terrace	2.85 x 2.15 m ²



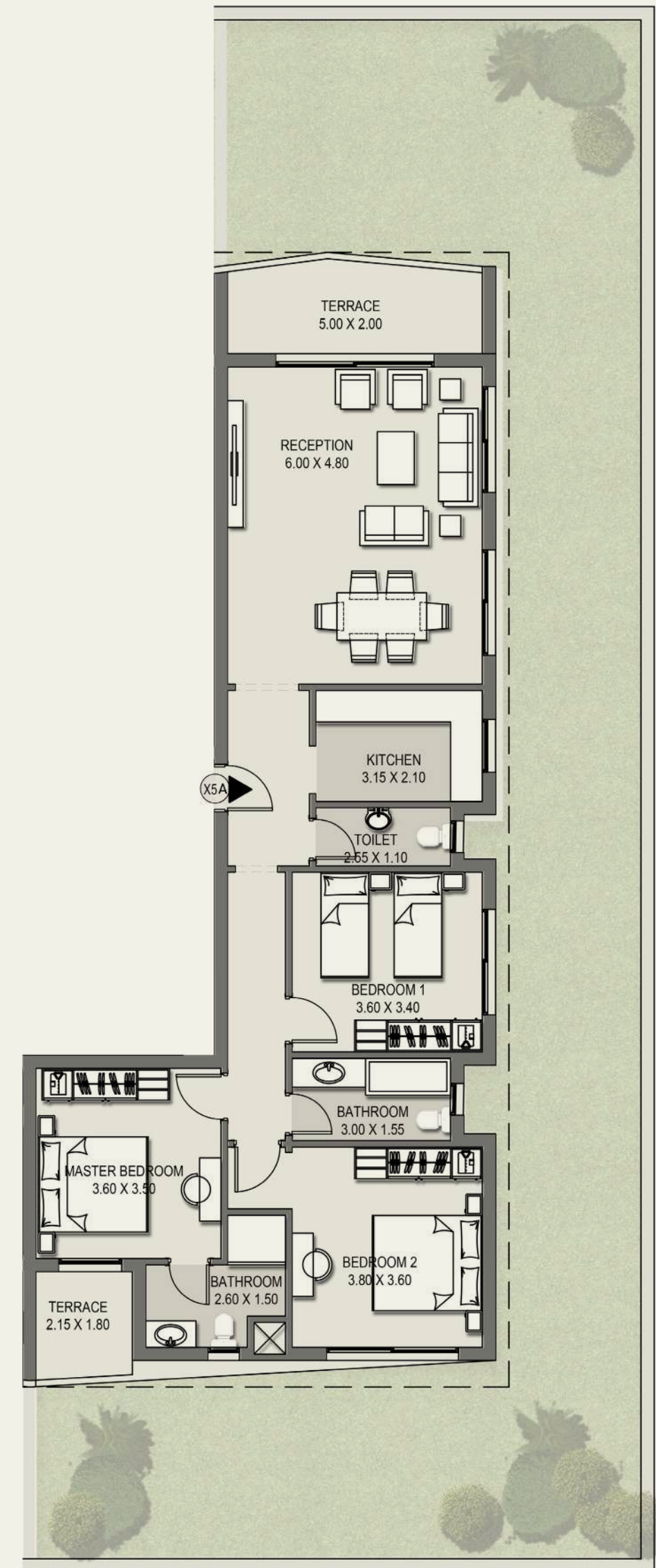
Disclaimer: All illustrations, floor plans and dimensions are conceptual and subject to development as per contract terms.

Camellia Apartments - X5A

Total BUA: 169 m²

First Floor

Reception	6.00 x 4.80 m ²
Entrance	3.30 x 1.55 m ²
Kitchen	3.15 x 2.10 m ²
Toilet	2.55 x 1.10 m ²
Bedroom 1	3.60 x 3.40 m ²
Master Bedroom	3.60 x 3.50 m ²
Bathroom	2.60 x 1.50 m ²
Terrace	2.15 x 1.80 m ²
Bathroom	3.00 x 1.55 m ²
Bedroom 2	3.80 x 3.60 m ²
Terrace	5.00 x 2.00 m ²



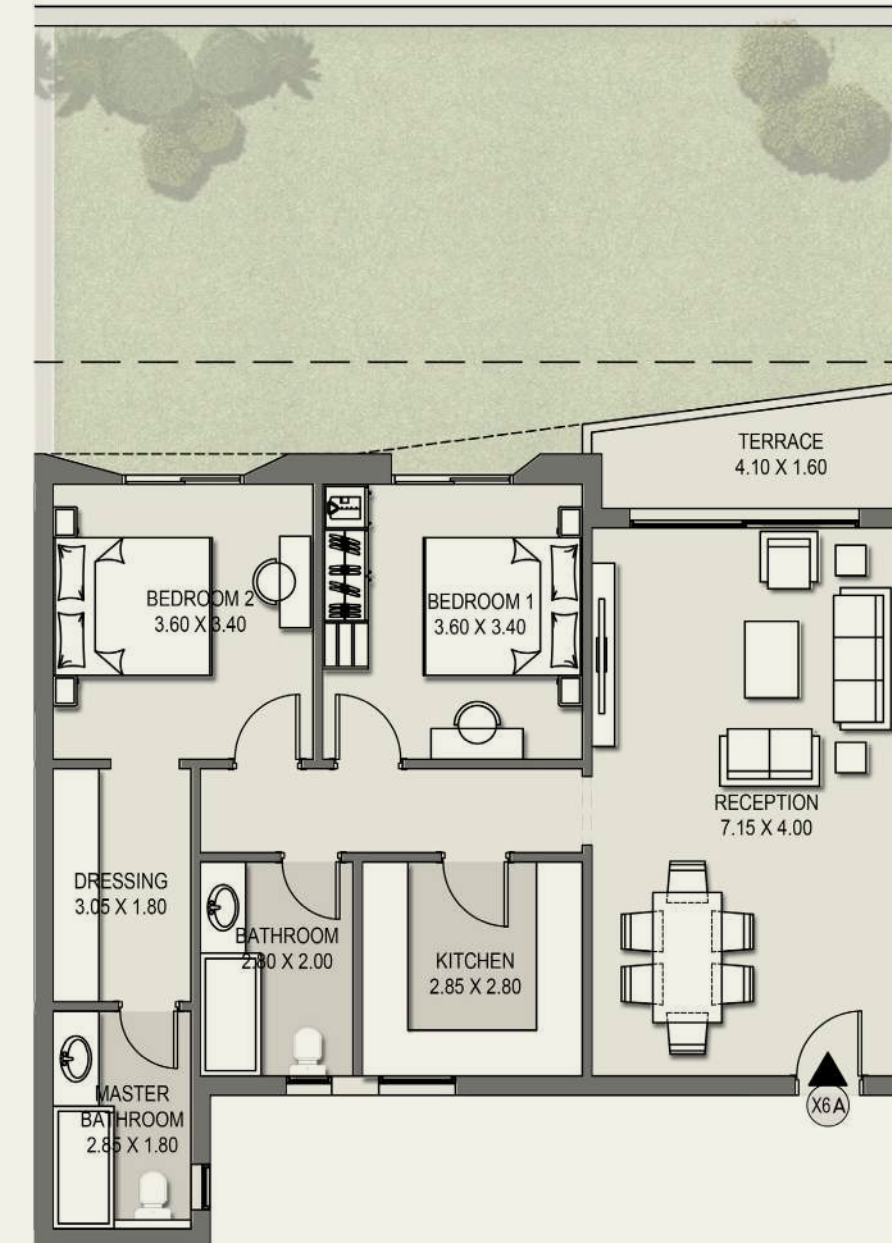
Disclaimer: All illustrations, floor plans and dimensions are conceptual and subject to development as per contract terms.

Camellia Apartments - X6A

Total BUA: 131 m²

First Floor

Reception	7.15 x 4.00 m ²
Bedroom 1	3.60 x 3.40 m ²
Bedroom 2	3.60 x 3.40 m ²
Dressing	3.05 x 1.80 m ²
Master Bathroom	2.85 x 1.80 m ²
Bathroom	2.80 x 2.00 m ²
Kitchen	2.85 x 2.80 m ²
Terrace	4.10 x 1.60 m ²



Disclaimer: All illustrations, floor plans and dimensions are conceptual and subject to development as per contract terms.

Camellia Apartments

Second & Fourth Floor

Second & Fourth Floor Plan

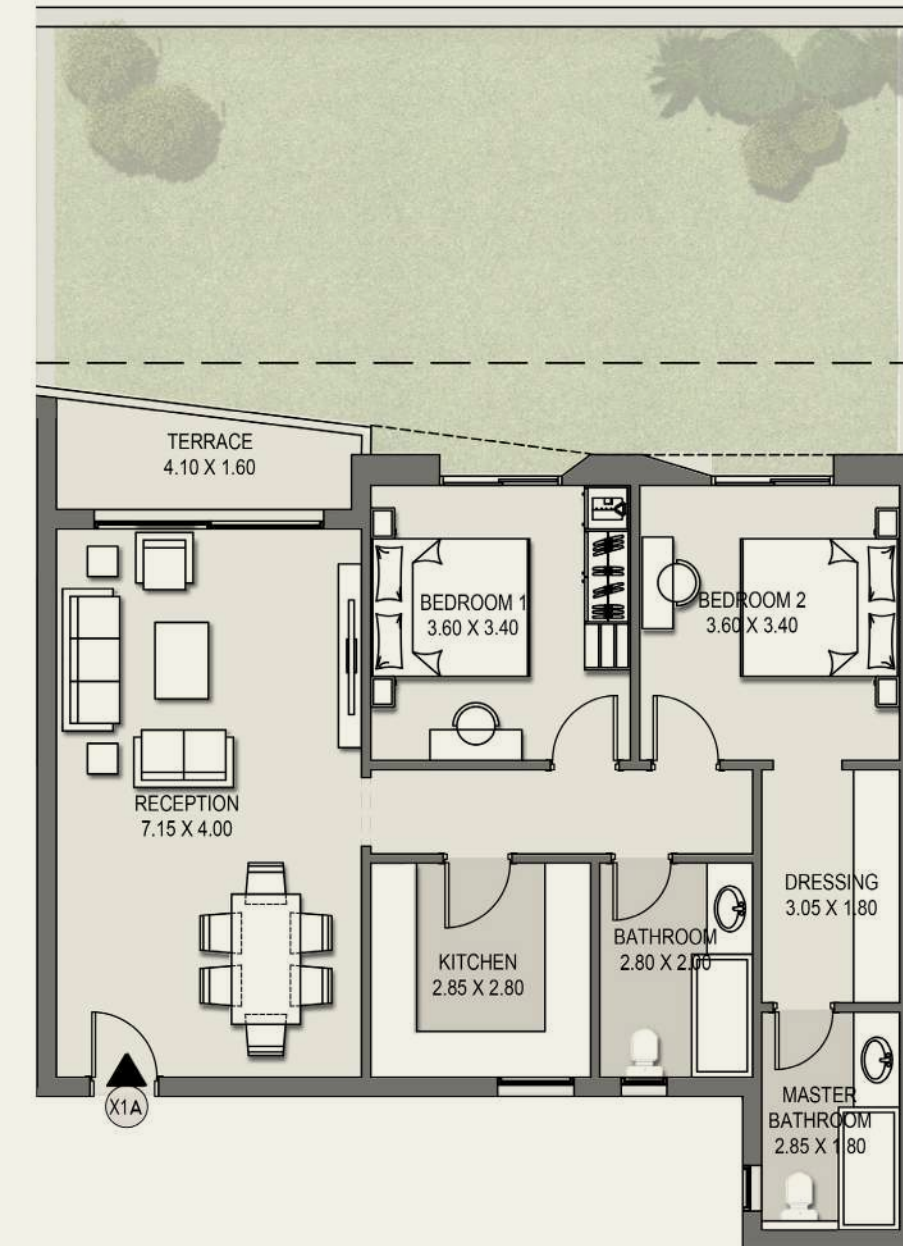


Camellia Apartments - X1A

Total BUA: 130.50 m²

Second Floor

Reception	7.15 x 4.00 m ²
Bedroom 1	3.60 x 3.40 m ²
Bedroom 2	3.60 x 3.40 m ²
Dressing	3.05 x 1.80 m ²
Master Bathroom	2.85 x 1.80 m ²
Bathroom	2.80 x 2.00 m ²
Kitchen	2.85 x 2.80 m ²
Terrace	4.10 x 1.60 m ²



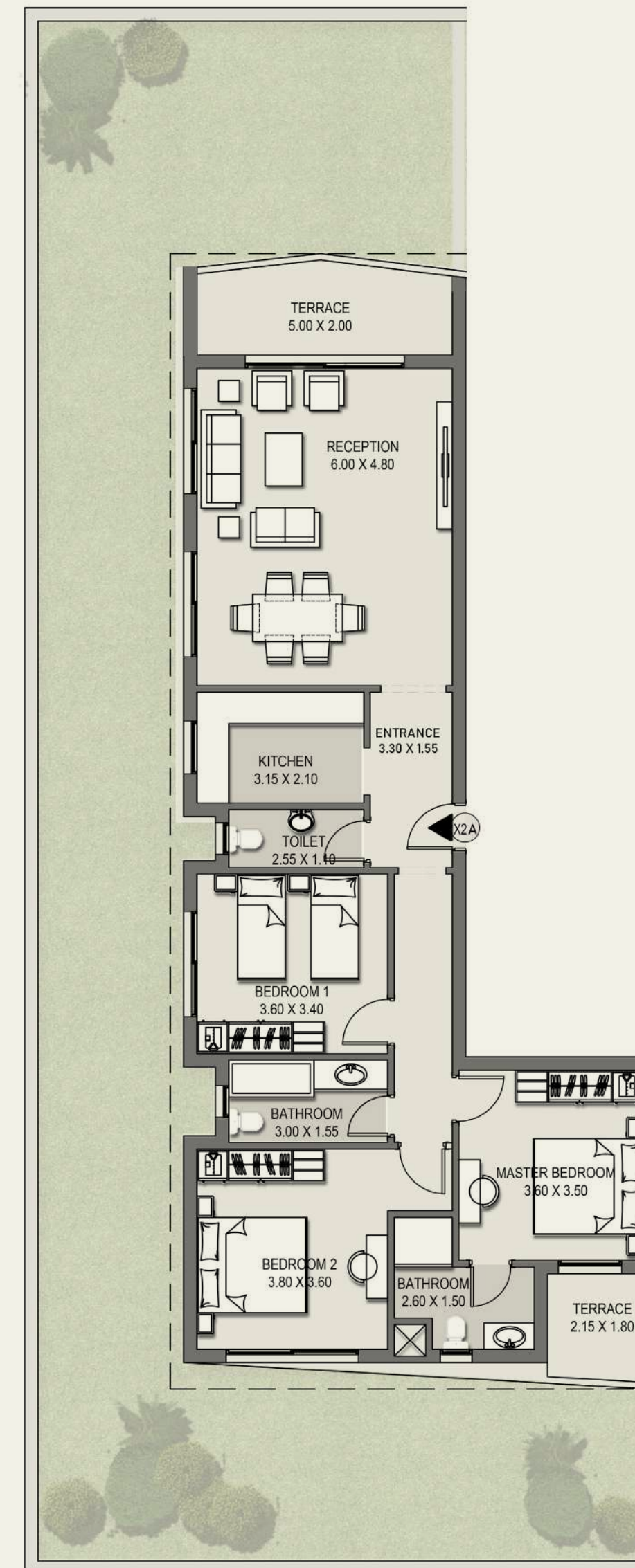
Disclaimer: All illustrations, floor plans and dimensions are conceptual and subject to development as per contract terms.

Camellia Apartments - X2A

Total BUA: 169 m²

Second Floor

Reception	6.00 x 4.80 m ²
Entrance	3.30 x 1.55 m ²
Kitchen	3.15 x 2.10 m ²
Toilet	2.55 x 1.10 m ²
Bedroom 1	3.60 x 3.40 m ²
Master Bedroom	3.60 x 3.50 m ²
Bathroom	2.60 x 1.50 m ²
Terrace	2.15 x 1.80 m ²
Bathroom	3.00 x 1.55 m ²
Bedroom 2	3.80 x 3.60 m ²
Terrace	5.00 x 2.00 m ²



Disclaimer: All illustrations, floor plans and dimensions are conceptual and subject to development as per contract terms.

Camellia Apartments - X3A

Total BUA: 58 m²

Second Floor

Reception	5.30 x 3.00 m ²
Master Bedroom	3.60 x 3.00 m ²
Bathroom	3.45 x 1.20 m ²
Terrace	2.85 x 2.15 m ²



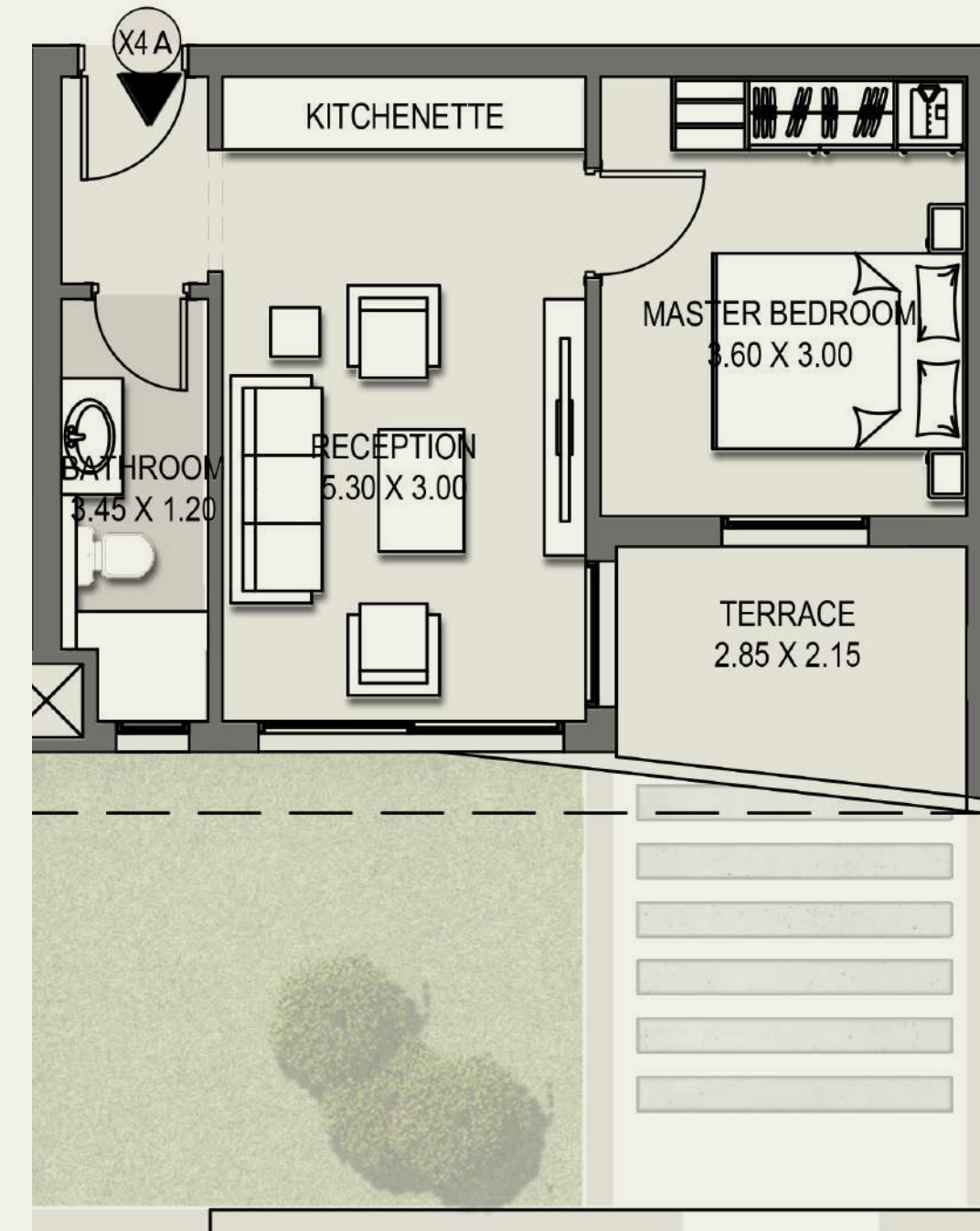
Disclaimer: All illustrations, floor plans and dimensions are conceptual and subject to development as per contract terms.

Camellia Apartments - X4A

Total BUA: 58 m²

Second Floor

Reception	5.30 x 3.00 m ²
Master Bedroom	3.60 x 3.00 m ²
Bathroom	3.45 x 1.20 m ²
Terrace	2.85 x 2.15 m ²



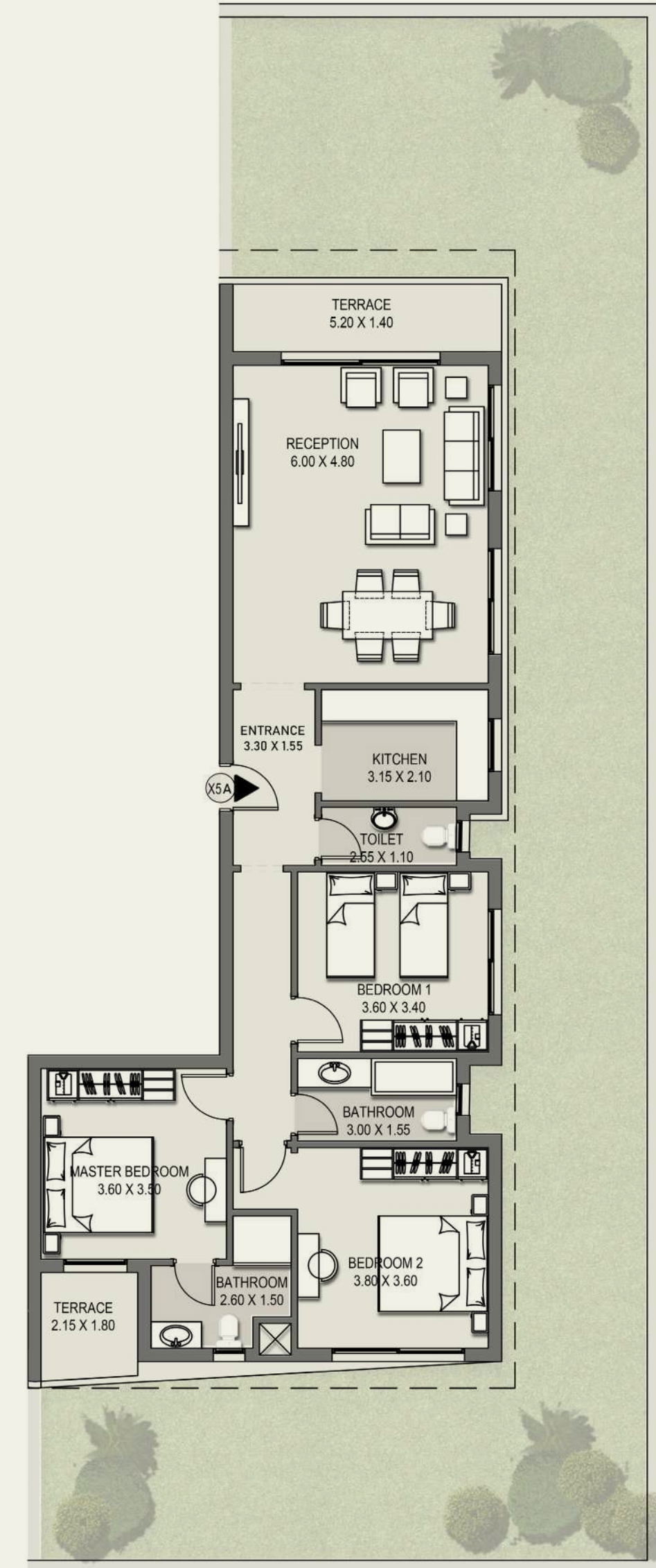
Disclaimer: All illustrations, floor plans and dimensions are conceptual and subject to development as per contract terms.

Camellia Apartments - X5A

Total BUA: 166.50 m²

Second Floor

Reception	6.00 x 4.80 m ²
Kitchen	3.15 x 2.10 m ²
Toilet	2.55 x 1.10 m ²
Entrance	3.30 x 1.55 m ²
Bedroom 1	3.60 x 3.40 m ²
Master Bedroom	3.60 x 3.50 m ²
Bathroom	2.60 x 1.50 m ²
Terrace	2.15 x 1.80 m ²
Bathroom	3.00 x 1.55 m ²
Bedroom 2	3.80 x 3.60 m ²
Terrace	5.20 x 1.40 m ²



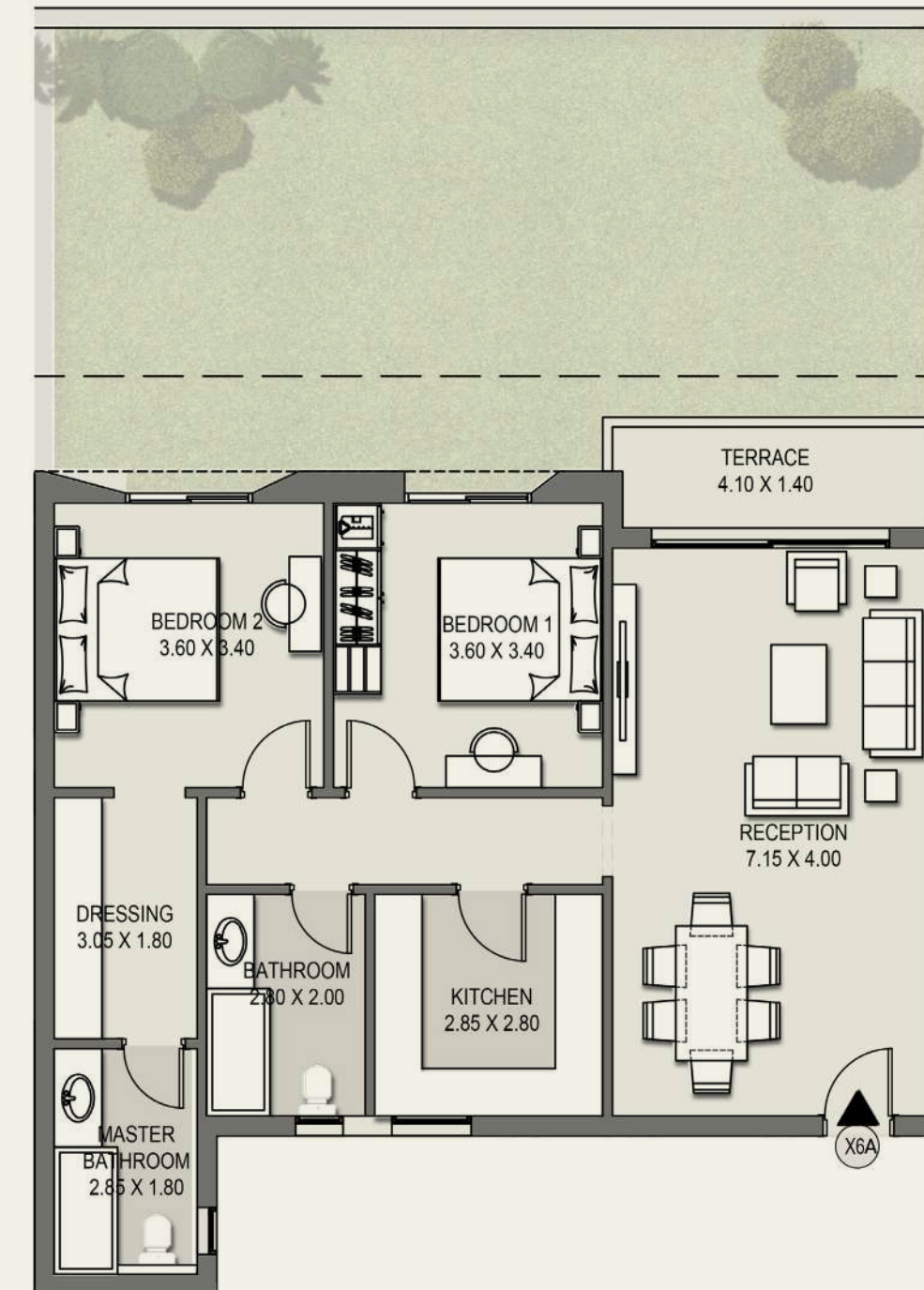
Disclaimer: All illustrations, floor plans and dimensions are conceptual and subject to development as per contract terms.

Camellia Apartments - X6A

Total BUA: 130.50 m²

Second Floor

Reception	7.15 x 4.00 m ²
Bedroom 1	3.60 x 3.40 m ²
Bedroom 2	3.60 x 3.40 m ²
Dressing	3.05 x 1.80 m ²
Master Bathroom	2.85 x 1.80 m ²
Bathroom	2.80 x 2.00 m ²
Kitchen	2.85 x 2.80 m ²
Terrace	4.10 x 1.40 m ²





Camellia Apartments
Sixth Floor

Sixth Floor Plan

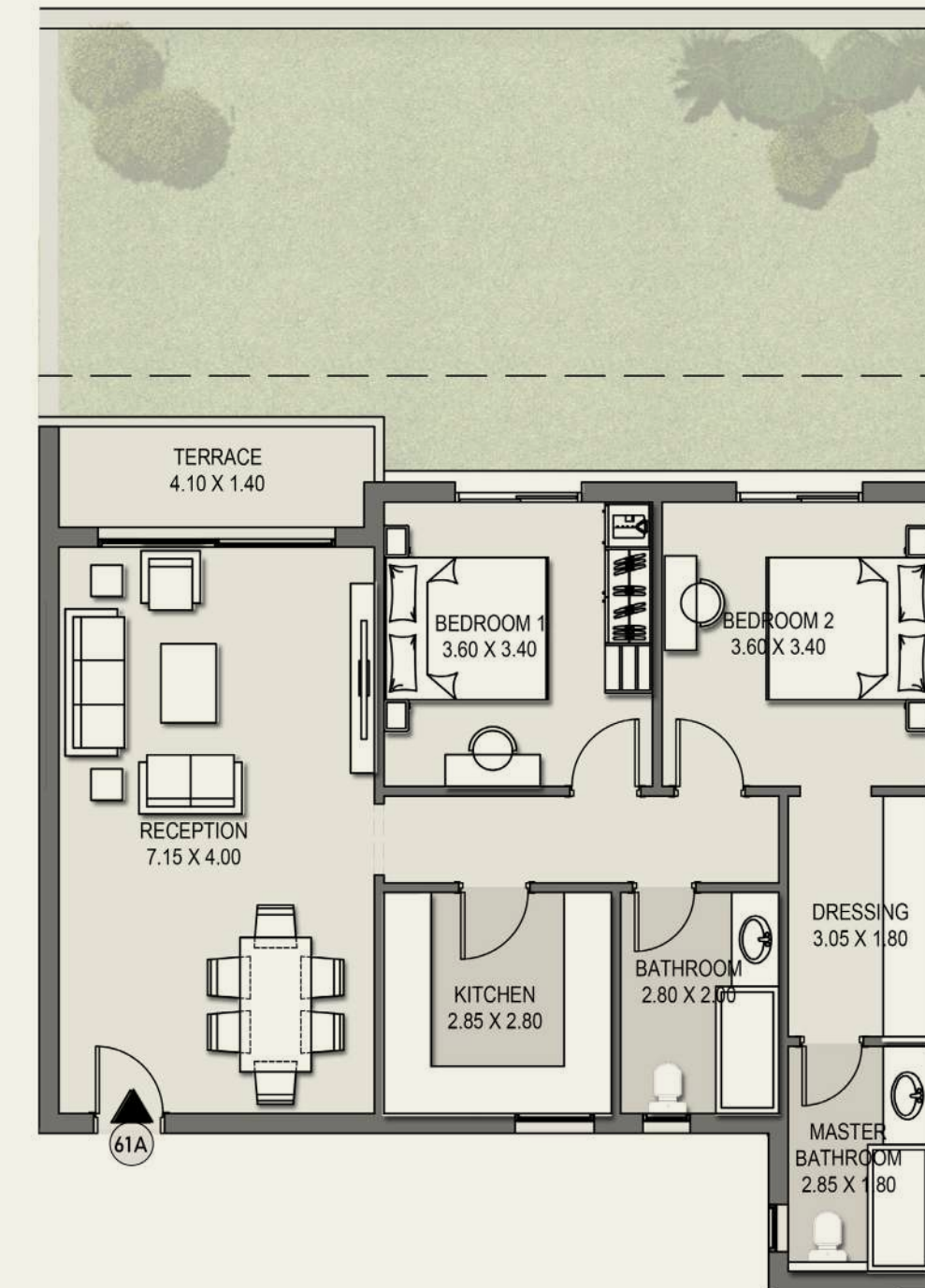


Camellia Apartments - 61A

Total BUA: 129 m²

Sixth Floor

Reception	7.15 x 4.00 m ²
Bedroom 1	3.60 x 3.40 m ²
Bedroom 2	3.60 x 3.40 m ²
Dressing	3.05 x 1.80 m ²
Master Bathroom	2.85 x 1.80 m ²
Bathroom	2.80 x 2.00 m ²
Kitchen	2.85 x 2.80 m ²
Terrace	4.10 x 1.40 m ²



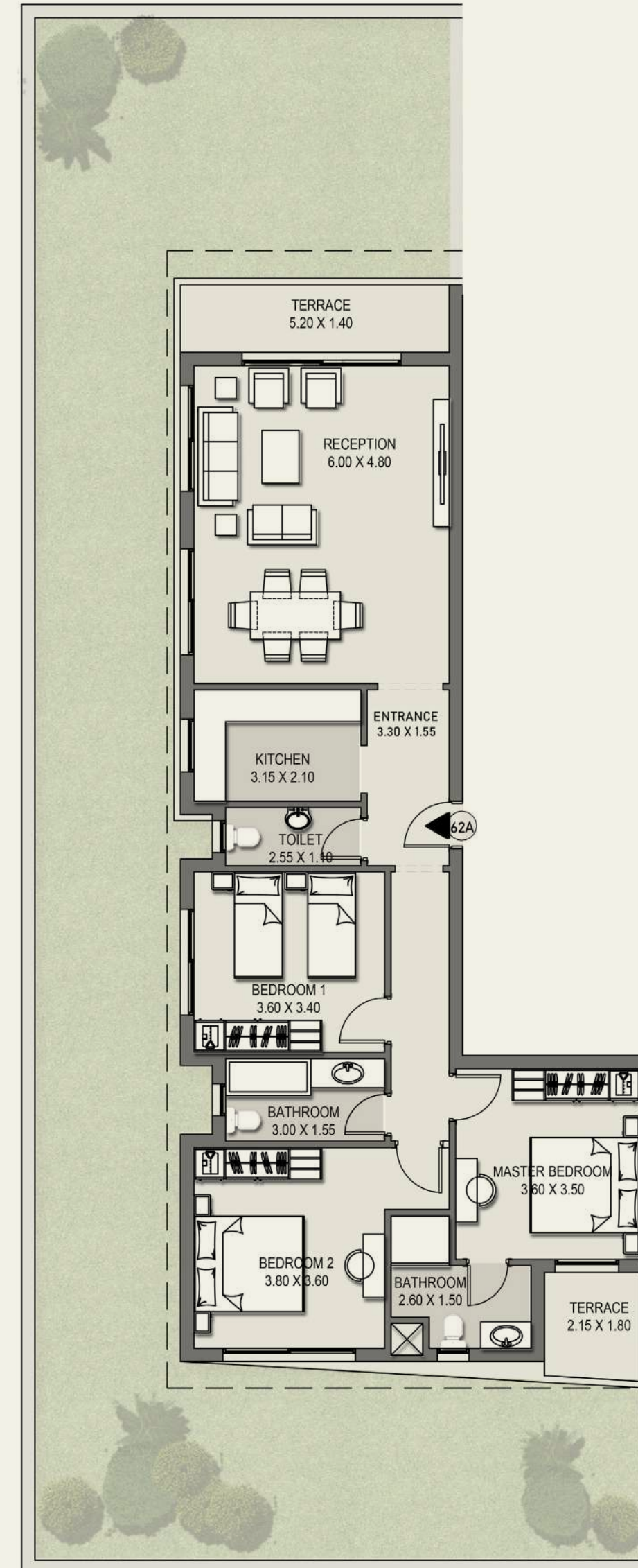
Disclaimer: All illustrations, floor plans and dimensions are conceptual and subject to development as per contract terms.

Camellia Apartments - 62A

Total BUA: 166.50 m²

Sixth Floor

Reception	6.00 x 4.80 m ²
Entrance	3.30 x 1.55 m ²
Kitchen	3.15 x 2.10 m ²
Toilet	2.55 x 1.10 m ²
Bedroom 1	3.60 x 3.40 m ²
Master Bedroom	3.60 x 3.50 m ²
Bathroom	2.60 x 1.50 m ²
Terrace	2.15 x 1.80 m ²
Bathroom	3.00 x 1.55 m ²
Bedroom 2	3.80 x 3.60 m ²
Terrace	5.20 x 1.40 m ²



Disclaimer: All illustrations, floor plans and dimensions are conceptual and subject to development as per contract terms.

Camellia Apartments - 63A

Total BUA: 58 m²

Sixth Floor

Reception	5.30 x 3.00 m ²
Master Bedroom	3.60 x 3.00 m ²
Bathroom	3.45 x 1.20 m ²
Terrace	2.85 x 2.15 m ²



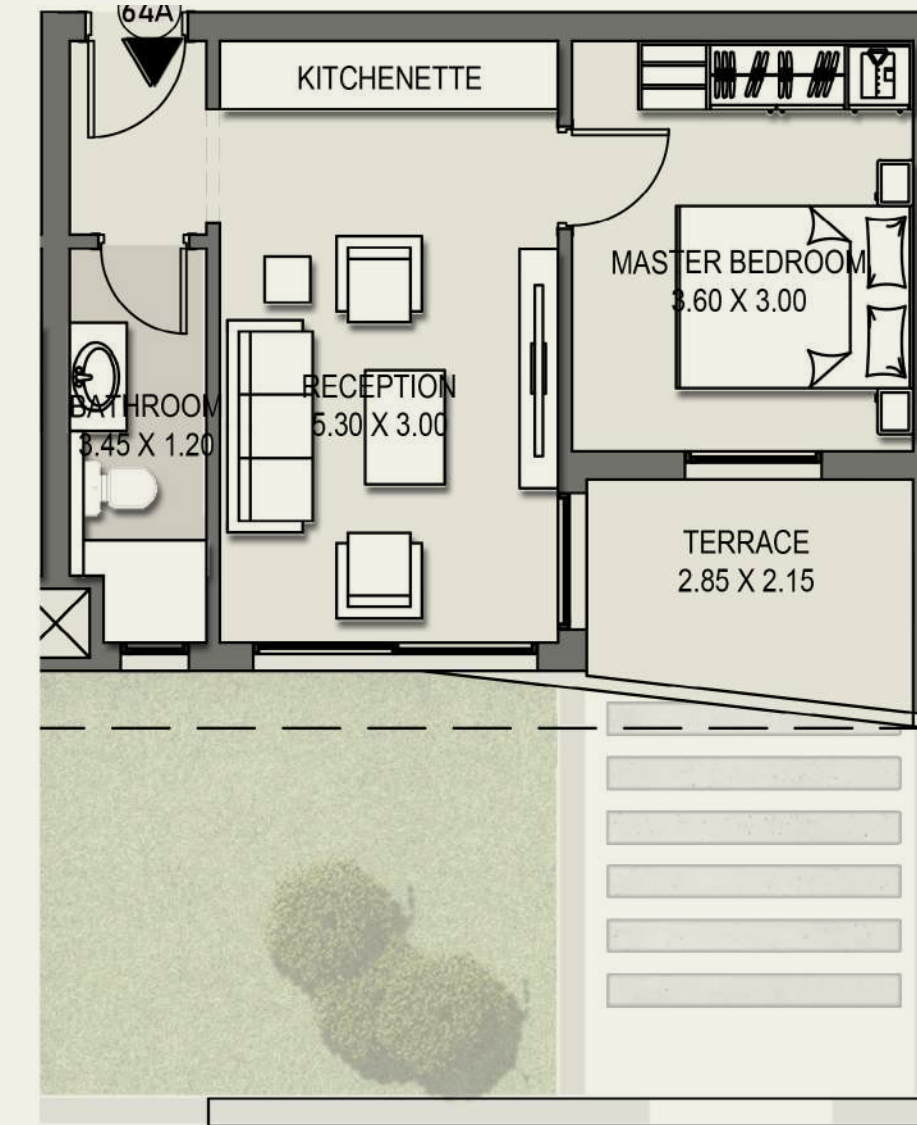
Disclaimer: All illustrations, floor plans and dimensions are conceptual and subject to development as per contract terms.

Camellia Apartments - 64A

Total BUA: 58 m²

Sixth Floor

Reception	5.30 x 3.00 m ²
Master Bedroom	3.60 x 3.00 m ²
Bathroom	3.45 x 1.20 m ²
Terrace	2.85 x 2.15 m ²



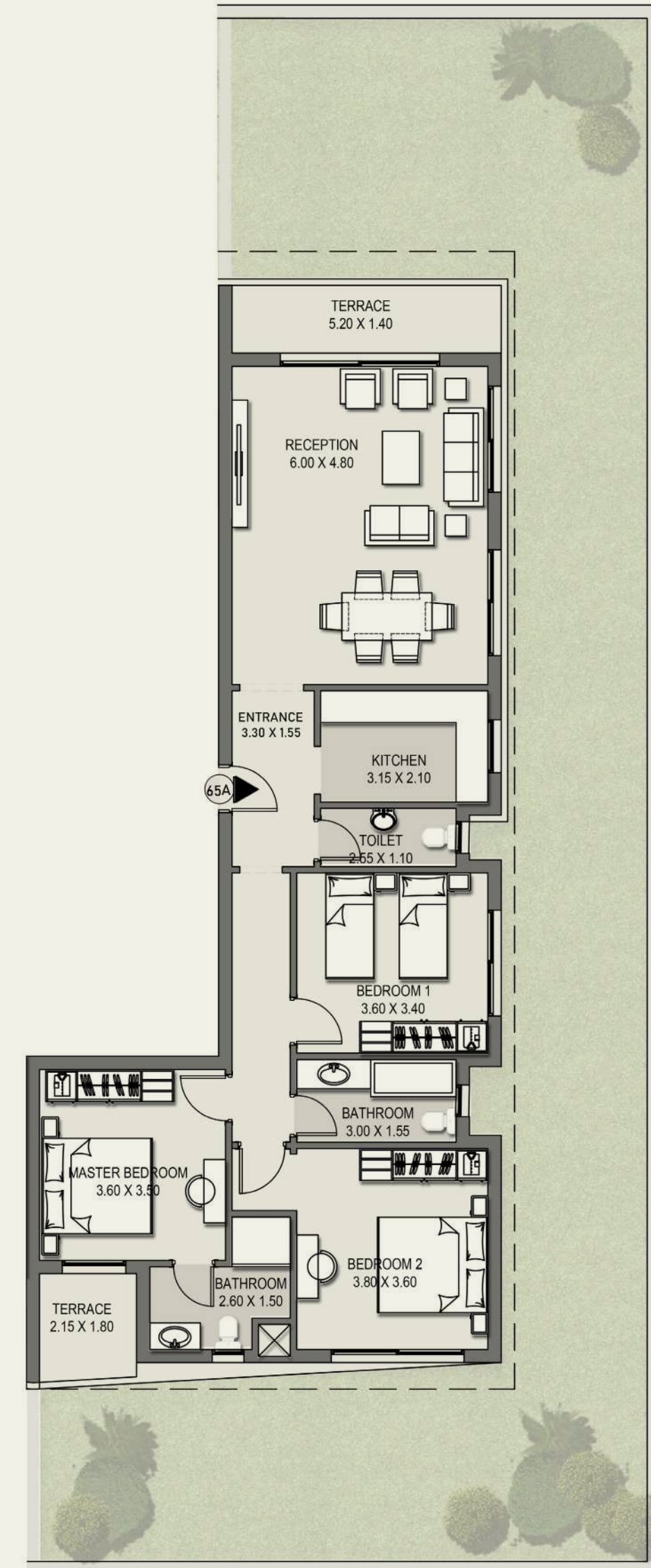
Disclaimer: All illustrations, floor plans and dimensions are conceptual and subject to development as per contract terms.

Camellia Apartments - 65A

Total BUA: 166.50 m²

Sixth Floor

Reception	6.00 x 4.80 m ²
Kitchen	3.15 x 2.10 m ²
Toilet	2.55 x 1.10 m ²
Entrance	3.30 x 1.55 m ²
Bedroom 1	3.60 x 3.40 m ²
Master Bedroom	3.60 x 3.50 m ²
Bathroom	2.60 x 1.50 m ²
Terrace	2.15 x 1.80 m ²
Bathroom	3.00 x 1.55 m ²
Bedroom 2	3.80 x 3.60 m ²
Terrace	5.20 x 1.40 m ²



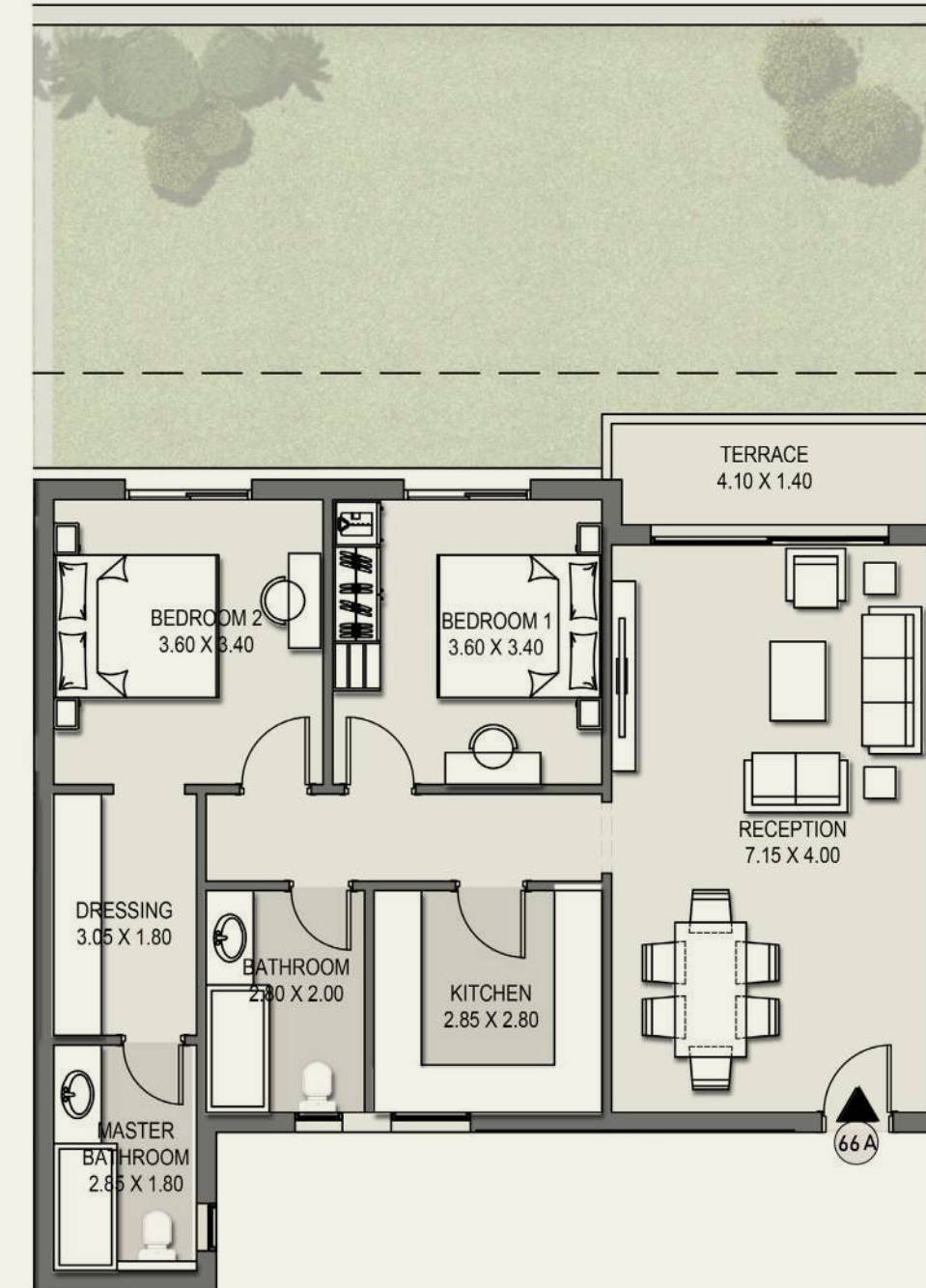
Disclaimer: All illustrations, floor plans and dimensions are conceptual and subject to development as per contract terms.

Camellia Apartments - 66A

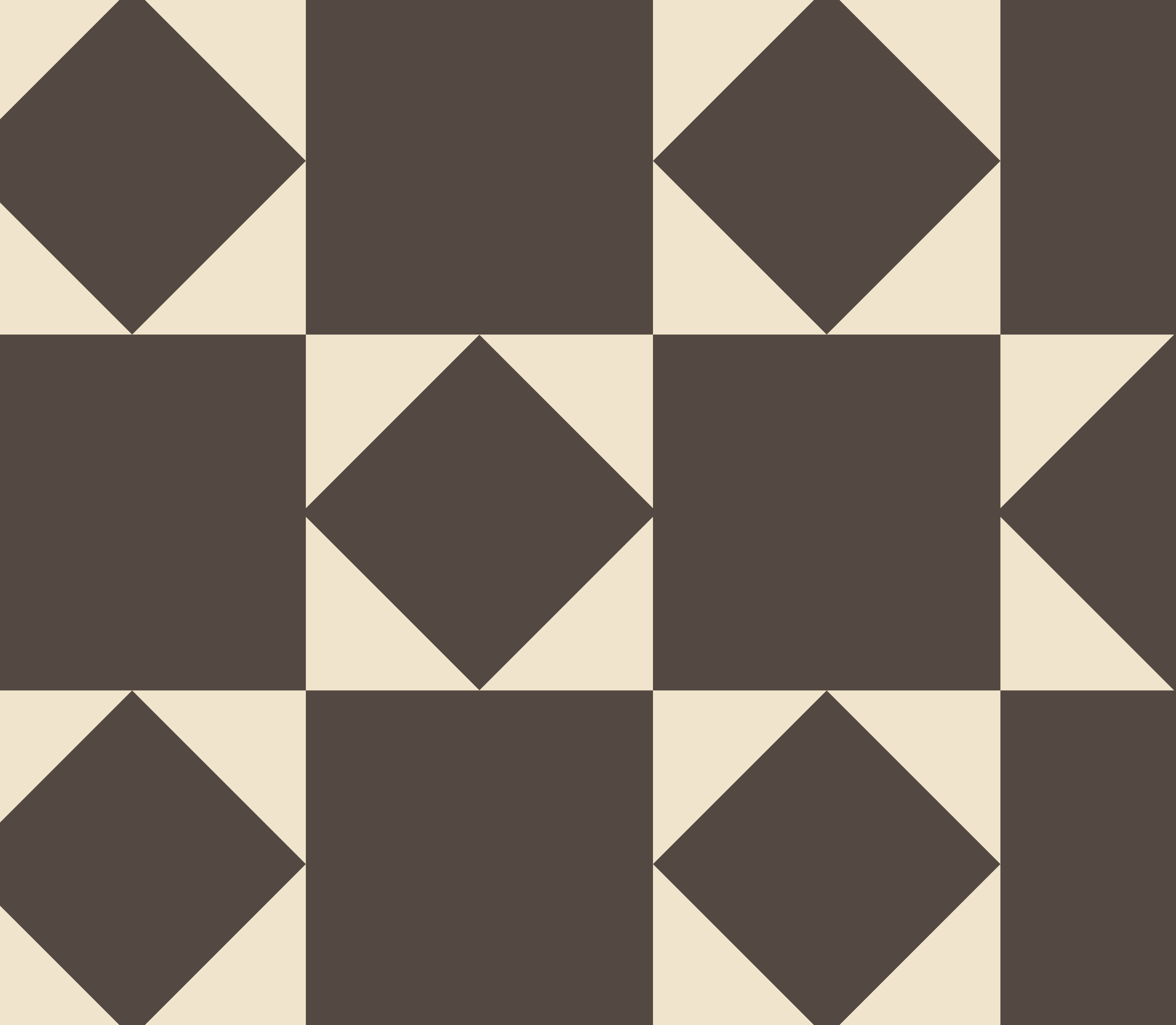
Total BUA: 129 m²

Sixth Floor

Reception	7.15 x 4.00 m ²
Bedroom 1	3.60 x 3.40 m ²
Bedroom 2	3.60 x 3.40 m ²
Dressing	3.05 x 1.80 m ²
Master Bathroom	2.85 x 1.80 m ²
Bathroom	2.80 x 2.00 m ²
Kitchen	2.85 x 2.80 m ²
Terrace	4.10 x 1.40 m ²



Disclaimer: All illustrations, floor plans and dimensions are conceptual and subject to development as per contract terms.



MINKA  A MADINET MASR
SIGNATURE COMMUNITY

Sales office

Extension of El-thawra street Cairo -
Suex road at Taj City in front of Cairo
International Airport.

16750 / madinetmasr.com